



HEARTLAND CATFISH FACTS

heartlandcatfish.com



UNITED STATES' **LARGEST** CATFISH FARMING & PROCESSING COMPANY
WITH PLANTS LOCATED IN ITTA BENA, MISSISSIPPI & GREENSBORO, ALABAMA

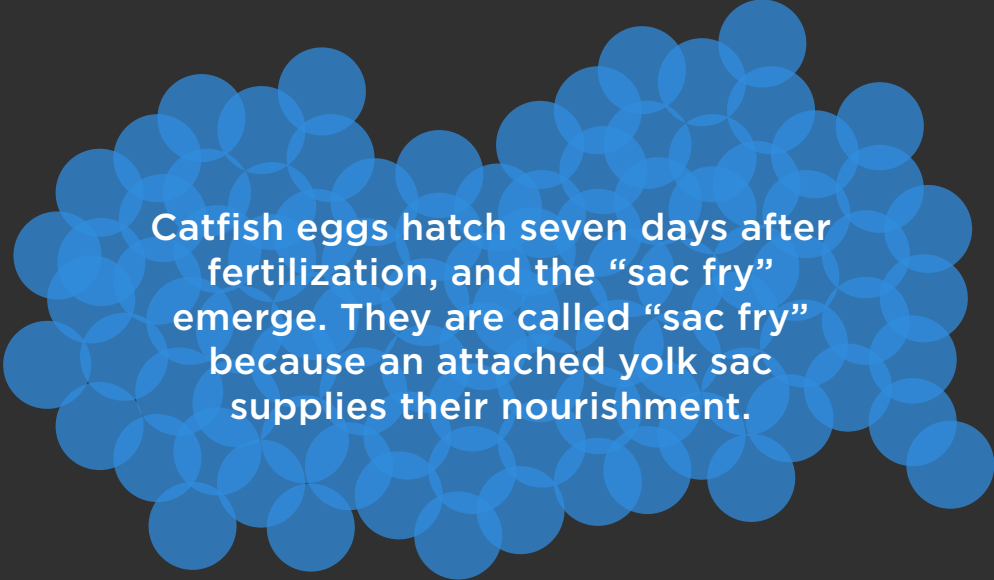
BEGAN PROCESSING CATFISH

1996 **12,000,000** POUNDS OF LIVE CATFISH WITHIN FIRST YEAR

MORE THAN **50,000,000** POUNDS **TODAY** OF LIVE CATFISH PER YEAR

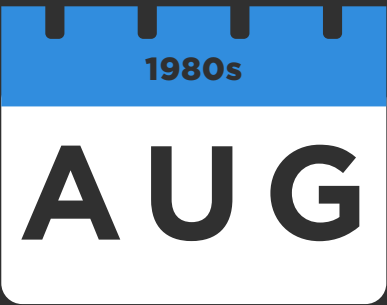


94% OF ALL U.S. FARM-RAISED CATFISH COMES FROM ALABAMA | ARKANSAS | LOUISIANA | MISSISSIPPI



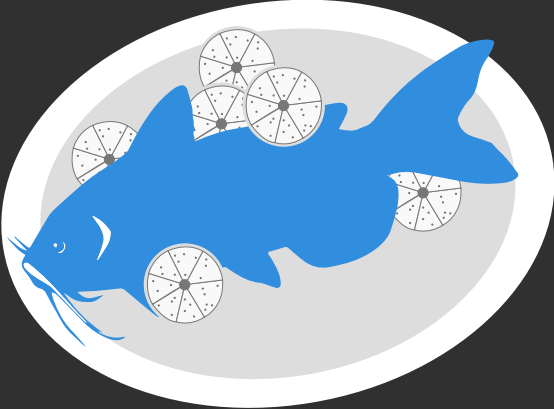
Catfish eggs hatch seven days after fertilization, and the “sac fry” emerge. They are called “sac fry” because an attached yolk sac supplies their nourishment.

TACKETT FISH FARMS SUPPLIES MORE THAN **50%** OF THE CATFISH PROCESSED BY HEARTLAND CATFISH COMPANY



CONGRESS DECLARED **AUGUST** AS NATIONAL CATFISH MONTH IN THE LATE 1980s

EVERY HOUR HEARTLAND CATFISH COMPANY CAN FREEZE **18,000** POUNDS

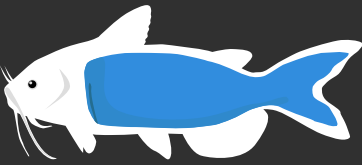


A **HIGH-PROTEIN** FLOATING FEED GIVE THE CATFISH A CLEANER Milder FLAVOR

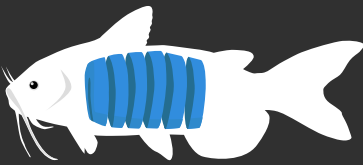


HEARTLAND CATFISH PRODUCTS ARE SOLD BOTH FRESH & FROZEN AS SKINLESS

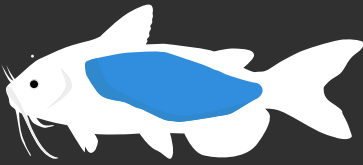
WHOLE FISH



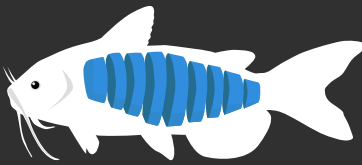
STEAKS



FILLETS



STRIPS



NUGGETS

